

## One GRIPflow Part Replaces Two Fineblank Parts...

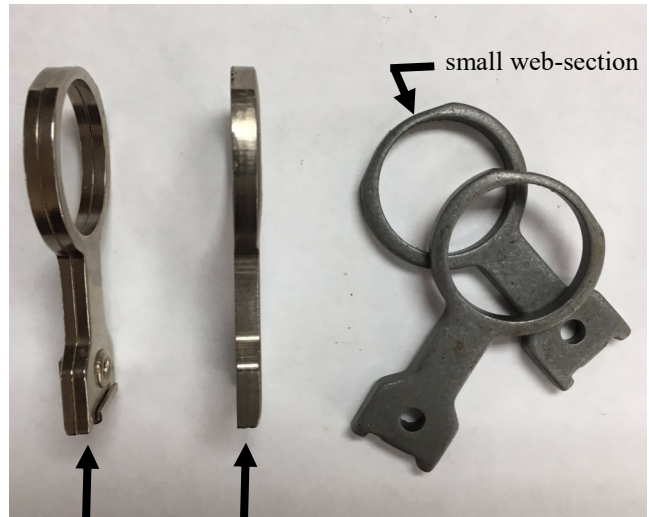
Every so often a customer asks you to quote a part that is already in production and made by someone else.

To make a finished part Fineblanking had to stamp two parts (because of the small web-section). Next was sanding the burr side and the die-roll side in order to have a good fit for staking the two parts together... a lot of time and money.

EBway quoted making one part which provided a tremendous cost savings. We successfully pierced the hole with the small web-section (0.079"/2mm) in 0.184" thick material.

Another example of our economical alternative to fineblanking.

*The turning point for the metal stamping industry has arrived—why not become a part of it!*



**Fineblanking**  
- 2 stampings to  
make the part

**GRIPflow**  
- 1 stamping to  
make the part

Part: Power Tool Link  
Material: SAE 1008-1010 Steel  
Thickness: 0.184" (4.67mm)

---

**GRIPflow is NOT Fineblanking.** GRIPflow utilizes a conventional punch press. Fineblanking requires a triple-action press and special tooling. Ask for our report “Fineblanking Alternative.”

---

**Send us your challenges and we  
will evaluate and advise if they  
can be made by GRIPflow.**

**For more information on our services  
contact us — it could be the most profit-  
able thing you do today!**

**EBWAY**

6600 N.W. 21 Avenue  
Fort Lauderdale, FL 33309  
Tel.: 954-971-4911  
Fax: 954-971-5516  
Email: ebway@ebway.com

**www.ebway.com**